

## CR - ODF series Optical Fibre Distribution Frame

Growth of telecom industry has driven widespread deployment of optical fibre. Network operators need solutions in order to expand distribution sites and optical infrastructures efficiently and flexibly anytime.

Austin hughes ODF (optical fibre distribution frame) is designed with highest capacity and superior cable management. It is an ultimate solution which provides flexibility to meet the specific needs of customers and configure the frame to optimize their network.



**RoHS2**  
COMPLIANCE

**REACH**

**Green | Production**

The ODF series rack is recognized as RoHS2 and REACH compliance by SGS accredited testing laboratory.

**ISO-Certified**

**9001 14001**

The design and manufacturing process of the series achieves the BSi ISO9001 quality control plus ISO14001 environment standard.

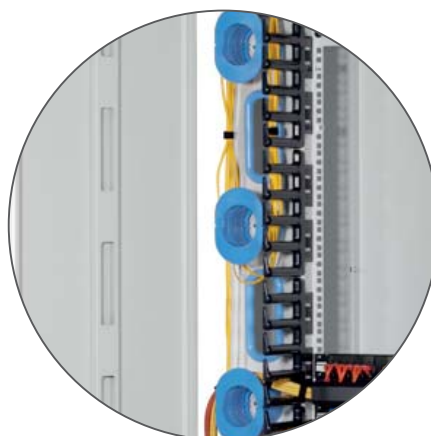
**1000 kg**

**2200 lb**

Designed for heavy-duty application, the ODF series rack holds 1000 kg / 2200 lb load rating.



**Quick Access Design for Cabling**



**Vertical Cable Access**



**Horizontal Cable Access**

## Standard Package / Size

	Model No.	Width		Depth		Height			
						Overall		Effective	
		mm	inch	mm	inch	mm	inch	mm	inch
42U	CR-F42A	800	31"	400	16"	2135	84"	1867	74"
	CR-F42B	800	31"	400	16"	2135	84"	1867	74"

\*\*Custom size on request



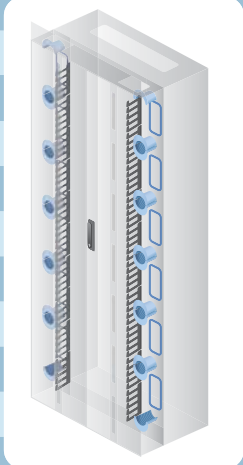
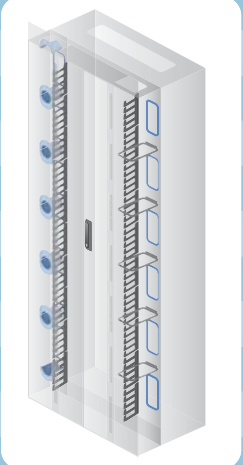
REACH



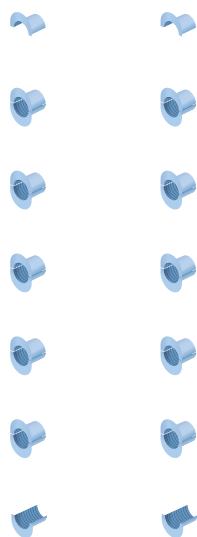
### Standard Color

- Grey White ( RAL 9002 )

\*\* Custom color on request

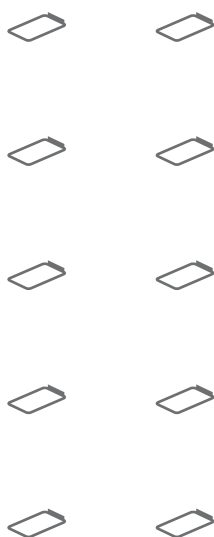
CR-F42A ( Fibre Organizer bundled )	Configuration	CR-F42B ( Fibre Organizer & Cable Ring bundled )
	Enhanced Framework w/ Static Loading 1000 kg / 2200 lb	
	40U Finger Guide ( Left & Right )	
	Front Fibre Management Spools ( Left & Right )	X
	X Front Fibre Management Spools ( Left ) + Cable Rings ( Right )	
	Front Cable Access Holes w/ Foam Rubber Clamps	
	Top & Bottom Cable Access Hole	
	Front Middle Split Door w/ Swing Handle Lock	
	Side Panel w/ Key Lock, Pair	
	Rear Screwed Panel	
	M6 Screw Fixing, Pack of 50	
	Color : Grey White	
		

## >>> Cabling Accessories



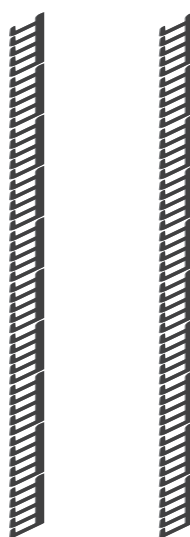
### Fibre Management Spool

- Allow proper fibre cabling
- 2 sides bundled for CR-F42A
- 1 side bundled for CR-F42B



### Cable Ring, pack of 5

- Size : 100 x 147 mm
- Rigid structure
- Material : Steel
- 1 side bundled for CR-F42B



### Finger Guide, pair

- Provide an organized cable system
- Material : Plastic
- Depth : 105 mm
- 2 sides bundled for CR-F42A / B



## >>> Cabling Access

### ■ Top Cable Access Hole

- Size : 580 x 120 mm

### ■ Top Cable Shielding Panel

- Offer enhanced cable aesthetics
- Provide an organized cable management

### ■ Front Cable Access Holes left & right side

- Size : 50 x 140 mm
- 6 holes positioned each side ( left & right )
- Foam rubber cable clamps bundled

### ■ Bottom Cable Access Hole

- Size : 580 x 120 mm

### ■ Side Panel, pair

- Detachable side panel
- Secure and shield cables
- Key lock

### ■ Front Middle Split Door

- Stylish and detachable
- Secure and shield cables
- Swing handle lock



## >>> Peripherals

### ■ Cable Management Panel, pc

- Handle big amount of cabling

Part no. :

**CMP-1B** ( 1U )

**CMP-2B** ( 2U )

### ■ Fibre Management Panel, pc

- Maintain a neat and organized cable layout

Part no. :

**FMP-2B** ( 2U )

**FMP-3B** ( 3U )

**FMP-4B** ( 4U )

### ■ Cantilever shelf

Part no. :

**MS19** ( 190 mm deep )

### ■ 1U / 2U Rackmount PDU

**Outlet :** IEC C13 / C19  
UK BS1363  
US NEMA  
Schuko, French

**Voltage :** 230V / 208V / 110V

**Series :** Basic  
Metered  
Intelligent Monitored  
Intelligent Monitored + Outlet Measurement  
Intelligent Switched  
Intelligent Switched + Outlet Measurement

**Phase :** 1-Phase  
3-Phase



## Benefits of Flat Pack

CR 2-post rack provides an ideal rack mount cabling solution and the flat pack allows an easy project deployment.

### >> Flexible to transport

Flat Pack allows the flexibility for transport



### >> Easy to storage

Compact package is 50% smaller than an assembled package, so less space required for storage and shipping.



### >> Simple to install

Quick and easy assembly designed for untrained users to install.



## Cable Management

<b>CMP-1B</b>	1U cable management panel
<b>CMP-2B</b>	2U cable management panel
<b>FMP-2B</b>	2U fibre management panel
<b>FMP-3B</b>	3U fibre management panel
<b>FMP-4B</b>	4U fibre management panel

## Shelf, 19" mounting

<b>MS19</b>	Cantilever shelf, 190 mm deep, 20 kg loading
-------------	--

## Others

<b>M6</b>	M6 screw set, pack of 50
-----------	--------------------------

## Rackmount PDU

<b>H8UK90-13A_BS/3B-1</b>	Basic PDU, UK x 8
<b>H8C13/2C19-16A_EN/3B-1</b>	Basic PDU, C13 x 8 + C19 x 2
<b>H12C13-16A_EN/3B-1</b>	Basic PDU, C13 x 12
<b>H8C13-16A_EN/3B-1</b>	Basic PDU, C13 x 8
<b>H8UK90-13A-MD_BS/3B-1</b>	Metered PDU, UK x 8
<b>H8C13/2C19-16A-MD_EN/3B-1</b>	Metered PDU, C13 x 8 + C19 x 2
<b>H12C13-16A-MD_EN/3B-1</b>	Metered PDU, C13 x 12
<b>H8C13-16A-MD_EN/3B-1</b>	Metered PDU, C13 x 8

\* For more intelligent PDU details, please refer to the following link :  
<http://www.austin-hughes.com/infrapower/single-phase/pdu/intelligent-pdu>

Austin Hughes has an extensive distribution network, including the Americas, EMEA, ASEAN & APAC.  
Contact your nearest sales office for details of local representation.

**[www.austin-hughes.com.hk](http://www.austin-hughes.com.hk)**

**Sales Inquiry**  
[inquiry@austin-hughes.com.hk](mailto:inquiry@austin-hughes.com.hk)

**Technical Support**  
[support@austin-hughes.com.hk](mailto:support@austin-hughes.com.hk)

Distributed by:

Distributor by country on application